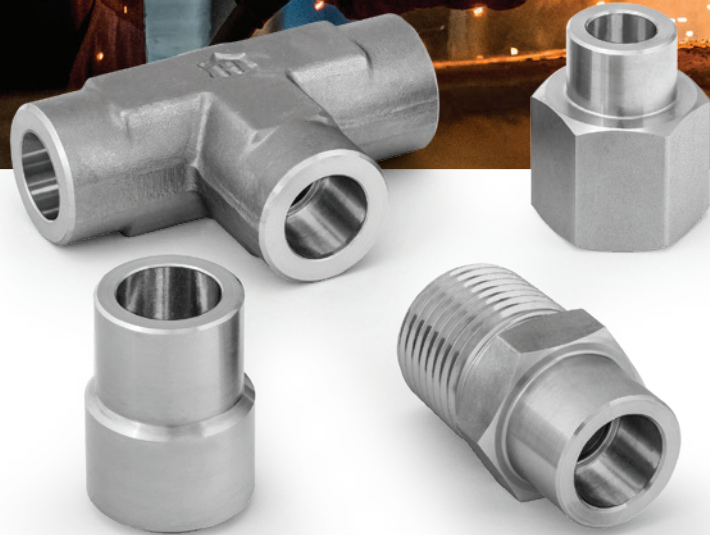




HAM-LET PRECISION INSTRUMENT WELD FITTINGS WELD LINE



WELDLINE FITTINGS

GENERAL

Our weldline fittings ensure safe and reliable operation of welded connections in fluid systems. The product range includes a variety of configurations such as straight nipple/union, elbow, tee, cross, adapters and reducers - for pipe and tube, butt weld, socket weld and in imperial and metric sizes. Size range is from 1/8" to 1" tube OD, 1/4" to 1" pipe size.

MATERIAL

Stainless steel weld fittings from stainless steel 316L

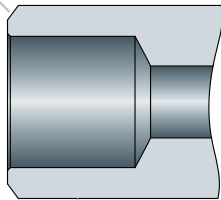
Straight fittings in accordance with ASTM A479, ASTM A276 and DIN EN10272

Shaped fittings in accordance with ASTM A182 and DIN EN10122-5

PBW-PIPE BUTT WELD

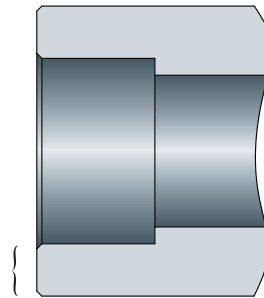
37.5° chamfer for proper weld fillet.

Outside diameter matches pipe size.



PS-PIPE SOCKET WELD

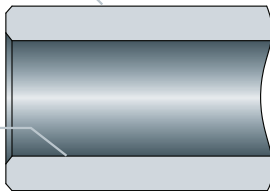
Heavy wall plus strength of material assures long life in severe service applications.



TBW - TUBE BUTT WELD

Male tube weld.

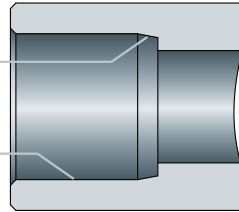
Quality machining of all surfaces assures consistent welding to tube.



TS - TUBE SOCKET WELD

The tapered socket speeds layout, assembly & alignment.

Precise machining of the socket assures proper tube fit.



Accurate socket depth assures proper tube support & consistent assembly.

WELDLINE INDEX

**TUBE SOCKET WELD
FEMALE ELBOW
IP90TS**



4

**TUBE SOCKET
WELD UNION
IP92TS / MP92TS**



6

**TUBE SOCKET WELD
FEMALE CONNECTOR
IP96TS**



8

**TUBE SOCKET WELD
UNION CROSS
IP91TS**



4

**TUBE BUTT WELD TO
TUBE SOCKET
IP93TBW**



6

**TUBE SOCKET WELD
MALE CONNECTOR
IP98TS / MP98TS**



8

**PIPE SOCKET WELD
UNION
IP92PS**



5

**TUBE SOCKET WELD
UNION TEE
IP94TS / MP94TS**



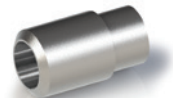
7

**TUBE SOCKET WELD
MALE ELBOW
IP99TS**



9

**PIPE BUTT WELD TO
TUBE SOCKET WELD
IP92PT**



5

**TUBE SOCKET WELD
UNION ELBOW
IP95TS**



7

HOW TO ORDER EXAMPLE

I

INCH / MM

I - inch
M - mm

P

Material

P - Stainless Steel 316

9X

Fitting Type

90 - 99

TS

Fitting Designator

TS	Tube Socket Weld
TBW	Tube Butt Weld
PT	Pipe Butt Weld to Tube Socket Weld
PS	Pipe Socket Weld
PBW	Pipe Butt Weld

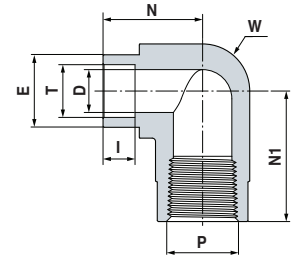
04H04

Size Designator

inch	mm
04 - 1/4	06 - 6mm
06 - 3/8	08 - 8mm
08 - 1/2	10 - 10mm
12 - 3/4	12 - 12mm
16 - 1	

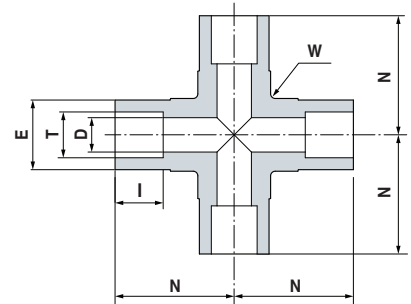
All orders should include material description and ordering information (see product table).

IP90TS
TUBE SOCKET WELD
FEMALE ELBOW



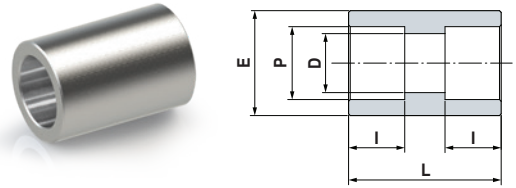
Ordering Information	T Tube O.D.	P NPT	N		N1		I		D Min. Opening		E		W Wrench Flat		Working Pressure [Psi]
	inch	inch	inch	mm	inch	mm	inch	mm	inch	mm	inch	mm	inch	mm	
IP90TS04H04	1/4	1/4	0.9	22.9	1.17	29.7	0.28	7.1	0.19	4.8	0.48	12.2	13/16	20.6	6600
IP90TS06H04	3/8	1/4	0.99	25.1	1.17	29.7	0.31	7.9	0.28	7.1	0.60	15.2	13/16	20.6	5300
IP90TS06H08	3/8	1/2	1.13	28.7	1.56	39.6	0.31	7.9	0.28	7.1	0.60	15.2	1 1/8	28.6	4900
IP90TS08H08	1/2	1/2	1.19	30.2	1.56	39.6	0.38	9.7	0.41	10.4	0.73	18.5	1 1/8	28.6	4900

IP91TS
TUBE SOCKET WELD
UNION CROSS



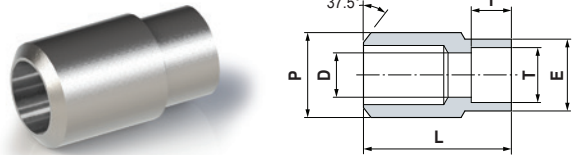
Ordering Information	T Tube O.D.	N		I		D Min. Opening		E		W Wrench Flat		Working Pressure [Psi]
	inch	inch	mm	inch	mm	inch	mm	inch	mm	inch	mm	
IP91TS04H00	1/4	0.86	21.8	0.28	7.1	0.19	4.8	0.53	13.5	5/8	15.8	10300
IP91TS06H00	3/8	1.04	26.4	0.31	7.9	0.28	7.1	0.64	16.3	13/16	20.6	8100
IP91TS08H00	1/2	1.13	28.7	0.38	9.7	0.41	10.4	0.81	20.6	13/16	20.6	6600
IP91TS12H00	3/4	1.49	37.9	0.44	11.2	0.62	15.7	1.20	30.5	1 3/8	34.9	5900
IP91TS16H00	1	1.92	48.8	0.62	15.7	0.88	22.4	1.45	36.8	1 11/16	42.9	5600

IP92PS PIPE SOCKET WELD UNION



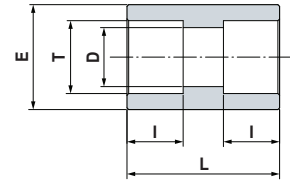
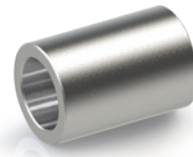
Ordering Information	P	L		I		D		E		Working Pressure [Psi]
	Pipe Size	inch	mm	inch	mm	inch	mm	inch	mm	
IP92PS04H00	1/4	1.06	26.9	0.39	9.9	0.36	9.1	0.88	22.4	8100
IP92PS06H00	3/8	1.12	28.4	0.39	9.9	0.49	12.4	1.03	26.2	7100
IP92PS08H00	1/2	1.12	28.4	0.39	9.9	0.62	15.7	1.25	31.8	6800
IP92PS12H00	3/4	1.75	44.5	0.51	13.0	0.82	20.8	1.47	37.3	5800
IP92PS16H00	1	1.75	44.5	0.51	13.0	1.05	26.7	1.86	47.2	6100

IP92PT PIPE BUTT WELD TO TUBE SOCKET WELD



Ordering Information	P	T	L		I		D		E		Working Pressure [Psi]
	Pipe Size	Tube O.D.	inch	mm	inch	mm	inch	mm	inch	mm	
IP92PT04H04	1/4	1/4	0.88	22.4	0.28	7.1	0.19	4.8	0.48	12.2	10300
IP92PT06H06	3/8	3/8	1.03	26.2	0.31	7.9	0.28	7.1	0.60	15.2	8100
IP92PT06H08	3/8	1/2	1.00	25.4	0.38	7.9	0.41	10.4	0.73	18.5	6600
IP92PT08H04	1/2	1/4	1.12	28.4	0.28	7.1	0.19	4.8	0.48	12.2	7800
IP92PT08H06	1/2	3/8	1.12	28.4	0.31	7.9	0.28	7.1	0.60	15.2	7800
IP92PT08H08	1/2	1/2	1.19	30.2	0.38	9.7	0.41	10.4	0.73	18.5	6600
IP92PT12H06	3/4	3/8	1.50	38.1	0.31	7.9	0.28	7.1	0.60	15.2	6600
IP92PT12H08	3/4	1/2	1.50	38.1	0.38	9.7	0.41	10.4	0.73	18.5	6600
IP92PT12H12	3/4	3/4	1.50	38.1	0.44	11.2	0.62	15.7	1.05	26.7	5900
IP92PT16H06	1	3/8	1.38	35.1	0.31	7.9	0.28	7.1	0.60	15.2	6000
IP92PT16H08	1	1/2	1.56	39.6	0.38	9.7	0.41	10.4	0.73	18.5	6000

IP92TS / MP92TS
TUBE SOCKET
WELD UNION



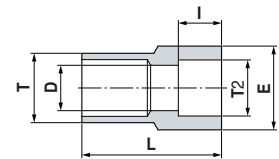
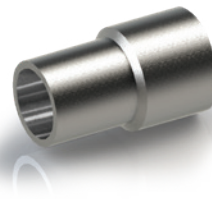
TUBE (INCH)

Ordering Information	T	L		I		D Min. Opening		E		Working Pressure [Psi]
	Tube O.D.	inch	mm	inch	mm	inch	mm	inch	mm	
IP92TS04H00	1/4	0.75	19.1	0.28	7.1	0.19	4.8	0.48	12.2	10300
IP92TS06H00	3/8	0.88	22.4	0.31	7.9	0.28	7.1	0.60	15.2	8100
IP92TS08H00	1/2	1.06	26.9	0.38	9.7	0.41	10.4	0.73	18.5	6600
IP92TS12H00	3/4	1.31	33.3	0.44	11.2	0.62	15.7	1.04	26.4	5900
IP92TS16H00	1	1.44	36.6	0.62	15.7	0.88	22.4	1.36	34.6	5600

TUBE (METRIC)

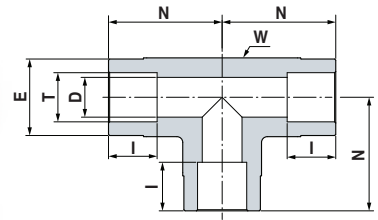
Ordering Information	T	L		I		D Min. Opening		E		Working Pressure [Psi]
	Tube O.D.	inch	mm	inch	mm	inch	mm	inch	mm	
MP92TS14H00	14.0	1.19	30.2	0.41	10.4	0.41	10.4	0.85	21.5	6235
MP92TS15H00	15.0	1.19	30.2	0.41	10.4	0.47	12.0	0.92	23.4	5800

IP93TBW
TUBE BUTT WELD
TO TUBE SOCKET



Ordering Information	T Tube O.D.	T2 Tube O.D.	L		I		D Min. Opening		E		Working Pressure [Psi]
			inch	mm	inch	mm	inch	mm	inch	mm	
IP93TBW04H02	1/4	1/8	0.56	14.9	0.10	2.5	0.09	2.3	0.29	7.4	12600
IP93TBW06H04	3/8	1/4	0.75	19.1	0.28	7.1	0.19	4.8	0.48	12.2	8200
IP93TBW08H04	1/2	1/4	0.88	22.4	0.28	7.1	0.19	4.8	0.50	12.7	7500
IP93TBW08H06	1/2	3/8	0.88	22.4	0.31	7.9	0.33	8.4	0.60	15.2	7500
IP93TBW12H08	3/4	1/2	1.12	28.4	0.38	9.7	0.41	10.4	0.75	19.1	6300
IP93TBW16H08	1	1/2	1.38	35.1	0.38	9.7	0.41	10.4	0.73	18.5	5300

IP94TS / MP94TS
TUBE SOCKET WELD
UNION TEE



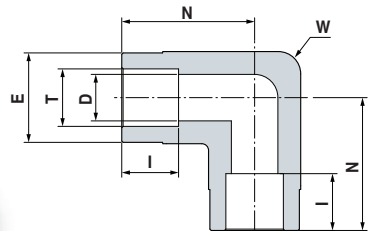
TUBE (INCH)

Ordering Information	T		N		I		D Min. Opening		E		W Wrench Flat		Working Pressure [Psi]
	inch	mm	inch	mm	inch	mm	inch	mm	inch	mm	inch	mm	
IP94TS02H00	1/8	15.0	0.59	15.0	0.10	2.5	0.09	2.3	0.35	9.0	7/16	11.1	12600
IP94TS04H00	1/4	21.8	0.86	21.8	0.28	7.1	0.19	4.8	0.53	13.5	5/8	15.9	10300
IP94TS06H00	3/8	26.4	1.04	26.4	0.31	7.9	0.28	7.1	0.69	17.5	11/16	17.5	8100
IP94TS08H00	1/2	29.7	1.17	29.7	0.38	9.7	0.41	10.4	0.81	20.6	13/16	20.6	6600
IP94TS12H00	3/4	39.6	1.56	39.6	0.44	11.2	0.62	15.7	1.13	28.6	1 1/8	28.6	5900
IP94TS16H00	1	48.8	1.92	48.8	0.62	15.7	0.88	22.4	1.45	36.8	1 11/16	42.9	5600

TUBE (METRIC)

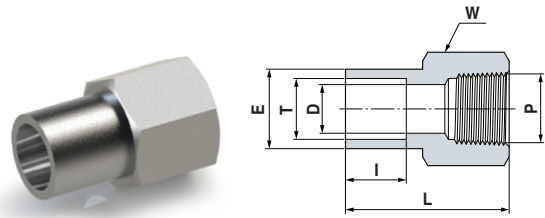
Ordering Information	T		N		I		D Min. Opening		E		W Wrench Flat		Working Pressure [Psi]
	inch	mm	inch	mm	inch	mm	inch	mm	inch	mm	inch	mm	
MP94TS12H00	12.0	29.7	1.17	29.7	0.38	9.7	0.37	9.5	0.81	20.6	13/16	20.6	6815
MP94TS14H00	14.0	28.7	1.13	28.7	0.41	10.4	0.41	10.4	0.94	23.8	15/16	23.8	6235
MP94TS18H00	18.0	37.1	1.46	37.1	0.41	10.4	0.62	15.7	0.94	23.8	15/16	23.8	4205

IP95TS
TUBE SOCKET WELD
UNION ELBOW



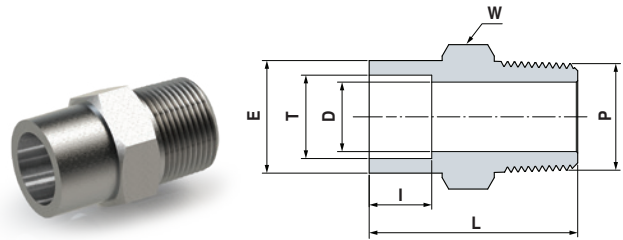
Ordering Information	T		N		I		D Min. Opening		E		W Wrench Flat		Working Pressure [Psi]
	inch	mm	inch	mm	inch	mm	inch	mm	inch	mm	inch	mm	
IP95TS04H00	1/4	21.8	0.86	21.8	0.28	7.1	0.19	4.8	0.53	13.5	5/8	15.8	10300
IP95TS06H00	3/8	26.4	1.00	26.4	0.31	7.9	0.28	7.1	0.69	17.5	11/16	17.5	8100
IP95TS08H00	1/2	29.7	1.17	29.7	0.38	9.7	0.41	10.4	0.81	20.6	13/16	20.6	6600
IP95TS12H00	3/4	39.6	1.56	39.6	0.44	11.2	0.62	15.7	1.13	28.6	1 1/8	28.6	5900
IP95TS16H00	1	48.8	1.92	48.8	0.62	15.7	0.88	22.4	1.45	36.8	1 11/16	42.9	5600

IP96TS
TUBE SOCKET WELD
FEMALE CONNECTOR



Ordering Information	T	P NPT	L		I		D Min. Opening		E		W Hex Flat	Working Pressure [Psi]
	inch		inch	mm	inch	mm	inch	mm	inch	mm		
IP96TS02H02	1/8	1/8	0.83	21.1	0.10	2.5	0.09	2.3	0.29	7.4	9/16	6500
IP96TS04H02	1/4	1/8	1.05	26.7	0.28	7.1	0.19	4.8	0.48	12.2	9/16	6500
IP96TS04H04	1/4	1/4	1.18	30.0	0.28	7.1	0.19	4.8	0.48	12.2	3/4	6600
IP96TS06H04	3/8	1/4	1.24	31.5	0.31	7.9	0.28	7.1	0.60	15.2	3/4	6600
IP96TS08H06	1/2	3/8	1.36	34.5	0.38	9.7	0.41	10.4	0.73	18.5	7/8	5300
IP96TS08H08	1/2	1/2	1.59	40.4	0.38	9.7	0.41	10.4	0.73	18.5	1 1/16	4900
IP96TS12H12	3/4	3/4	1.73	43.9	0.44	11.2	0.62	15.7	1.04	26.4	1 5/16	4600

IP98TS / MP98TS
TUBE SOCKET WELD
MALE CONNECTOR



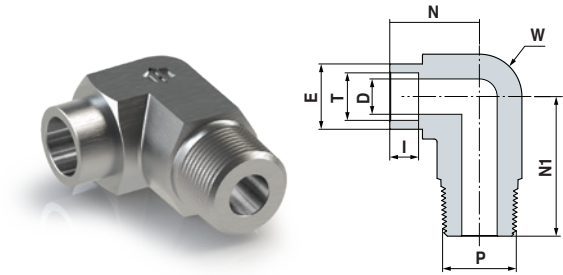
TUBE (INCH)

Ordering Information	T	P NPT	L		I		D Min. Opening		E		W Hex Flat	Working Pressure [Psi]
	inch		inch	mm	inch	mm	inch	mm	inch	mm		
IP98TS04H04	1/4	1/4	1.15	29.2	0.28	7.1	0.19	4.8	0.48	12.2	9/16	8000
IP98TS06H04	3/8	1/4	1.25	31.8	0.31	7.9	0.28	7.1	0.62	15.8	5/8	8000
IP98TS06H06	3/8	3/8	1.25	31.8	0.31	7.9	0.28	7.1	0.62	15.8	11/16	7800
IP98TS06H08	3/8	1/2	1.47	37.3	0.31	7.9	0.28	7.1	0.62	15.8	7/8	7700
IP98TS08H04	1/2	1/4	1.31	33.3	0.38	9.7	0.28	7.1	0.73	18.5	3/4	6600
IP98TS08H06	1/2	3/8	1.31	33.3	0.38	9.7	0.38	9.7	0.73	18.5	3/4	6600
IP98TS08H08	1/2	1/2	1.53	38.9	0.38	9.7	0.41	10.4	0.73	18.5	7/8	6600

TUBE (METRIC)

Ordering Information	T	P NPT	L		I		D Min. Opening		E		W Hex Flat	Working Pressure [Psi]
	inch		inch	mm	inch	mm	inch	mm	inch	mm		
MP98TS14H08	14.0	1/2	1.53	38.9	0.41	10.4	0.43	11.0	0.85	21.5	22.0	6235
MP98TS16H04	16.0	1/4	1.34	34.1	0.50	12.7	0.28	7.1	0.93	23.5	24.0	5800
MP98TS16H08	16.0	1/2	1.53	38.9	0.50	12.7	0.47	11.9	0.93	23.5	24.0	5800
MP98TS18H04	18.0	1/4	1.36	34.6	0.56	14.2	0.28	7.1	1.05	26.7	30.0	5365
MP98TS18H08	18.0	1/2	1.55	39.4	0.56	14.2	0.47	11.9	1.05	26.7	30.0	5365

IP99TS
TUBE SOCKET WELD
MALE ELBOW



Ordering Information	T Tube O.D.	P NPT	N		N1		I		D Min. Opening		E		W Wrench Flat		Working Pressure [Psi]
			inch	mm	inch	mm	inch	mm	inch	mm	inch	mm			
IP99TS04H04	1/4	1/4	0.79	20.1	0.94	24.0	0.28	7.1	0.19	4.8	0.48	12.2	1/2	12.7	8000
IP99TS06H04	3/8	1/4	1.04	26.4	1.05	26.7	0.31	7.9	0.28	7.1	0.64	16.3	11/16	17.5	8000
IP99TS06H06	3/8	3/8	0.97	24.6	1.03	26.2	0.31	7.9	0.28	7.1	0.60	15.2	11/16	17.5	7800
IP99TS06H08	3/8	1/2	1.02	25.9	1.45	36.9	0.31	7.9	0.28	7.1	0.60	15.2	13/16	20.6	7700
IP99TS08H08	1/2	1/2	1.08	27.4	1.45	36.9	0.38	9.7	0.41	10.4	0.73	18.5	13/16	20.6	6600

This document is proprietary to UCT and may not be copied, duplicated or used without the permission of UCT. UCT reserves the right to make changes to any portion of this document at any time without notice. The information furnished by UCT in this document is believed to be accurate and reliable. However, UCT assumes no responsibility for its use or for errors or omissions. All trademarks, models, names and logos in this catalogue are subject to the rights of UCT, unless indicated otherwise.